

# Product novelties 2019

## HPT - Tunnel double-action swing door

> The extraordinary fire protection swing door

**Fire protection** up to EI<sub>2</sub>90  
**Smoke protection** S<sub>a</sub>/S<sub>200</sub>  
**Pressure load resistance** up to ±8,000 Pa, up to 3 million load cycles  
**Material** steel / stainless steel

**NEW** Approval of the Federal Railway Authority (EBA)



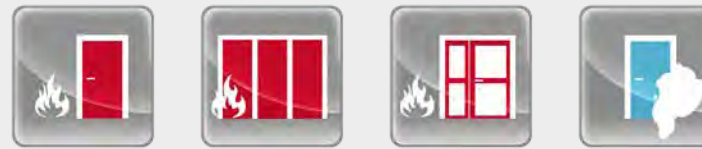
## HPS-ADVANCED - control system

> Your fire protection closure must have the right controller

- Battery-buffered FSA / FAA release device
- Universal usability for both centralised and decentralised systems
- Connection of light barrier and contact strips
- Control point with text display and manual release function
- Application for DIBt approval in progress



# HODAPP



Fire protection doors and gates

Smoke protection doors

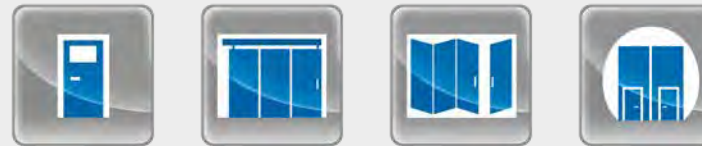


Water protection doors

Sound insulating doors

Burglary resistant doors

Bullet resistant doors



Multipurpose doors

Multipurpose sliding doors

Folding gates

Tunnel doors



Facility protection gates

Prison cell doors

Conveyor closures

Liftable gates

# HODAPP

## Product novelties 2019

> Doors that matter.



www.hodapp.de  
 info@hodapp.de

Hodapp GmbH & Co. KG  
 Grossweierer Strasse 77  
 D-77855 Achern  
 Tel.: +49 (7841) 6006-0  
 Fax: +49 (7841) 6006-10

01/2019 - Technical modifications reserved.

# Product novelties 2019

## HoSta - Multifunctional door

> A sophisticated steel door that can meet every requirement.

<b>Sound protection</b>	up to 60 dB
<b>Thermal insulation</b>	up to 1,5 (W/m <sup>2</sup> K)
<b>Air tightness</b>	up to class 4 special test -2,000/+1,600 Pa
<b>Heavy rain impermeability</b>	up to class 9A
<b>Wind load resistance</b>	up to class C5 special test ±6,000 Pa
<b>Fire protection</b>	up to EI <sub>1</sub> 60 / EI <sub>2</sub> 120
<b>Smoke protection</b>	S <sub>a</sub> /S <sub>200</sub>
<b>Burglary resistance</b>	up to RC-4 (also in combination with emergency exit function and glazing)
<b>Protection class</b>	IP66 (1-leaf)
<b>Bullet resistance</b>	FB 4, FB 6
<b>Endurance test</b>	500,000 cycles
<b>Design options</b>	glazing, skylight

### 3D hinge

- can carry door leaf weight of up to 300 kg
- completely maintenance-free and replaceable
- easy to adjust the door due to 3D adjustability
- available in galvanized steel and polished stainless steel
- no mortising work on the shell required due to particularly slim hinge fixture



## Ventilation grilles

- outstanding finish due to frameless design on one side
- up to 47 % ventilation cross section
- tested up to RC-4 (also with emergency exit function) and up to IP43D

### Designs:

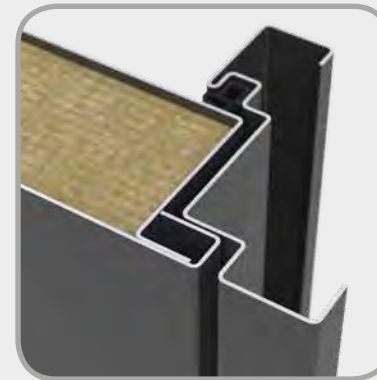
- Aluminium silver coloured (E6/EV1) anodized
- Steel primed or painted in RAL colour
- Stainless steel mill-finished, stainless steel 240 grain polished

## Flush-fitting design

For sophisticated architecture, the HoSta multifunctional door is also available with flush-fitting design, depending on the version.



Ventilation grille



Flush-fitting design

## Doors for transformer stations

> Fresh air and security.

<b>Material</b>	aluminium / steel / stainless steel
<b>Door leaf thickness</b>	50 mm (Alu) / 69 mm (steel, stainless steel)
<b>Burglary protection</b>	up to RC-4 (also with emergency exit function)
<b>Verification</b>	PEHLA tested design (optional)



## HTD - Tunnel-hinged door

> The perfect tunnel door.



EN 16034

<b>Fire protection</b>	up to EI <sub>2</sub> 120 HCM 120 / CN 240 (N3), HCM 120 (N3)
<b>Smoke protection</b>	S <sub>a</sub> /S <sub>200</sub>
<b>Pressure load capacity</b>	up to ±10,000 Pa, up to 3 million load cycles
<b>Material</b>	steel / stainless steel



Fire protection test



Fire side after the test

## HTD - Tunnel vehicle gate

> The big gate for all vehicles.

<b>Design options</b>	manual / fully automatic
<b>Fire protection</b>	up to EI <sub>2</sub> 120
<b>Material</b>	steel / stainless steel

